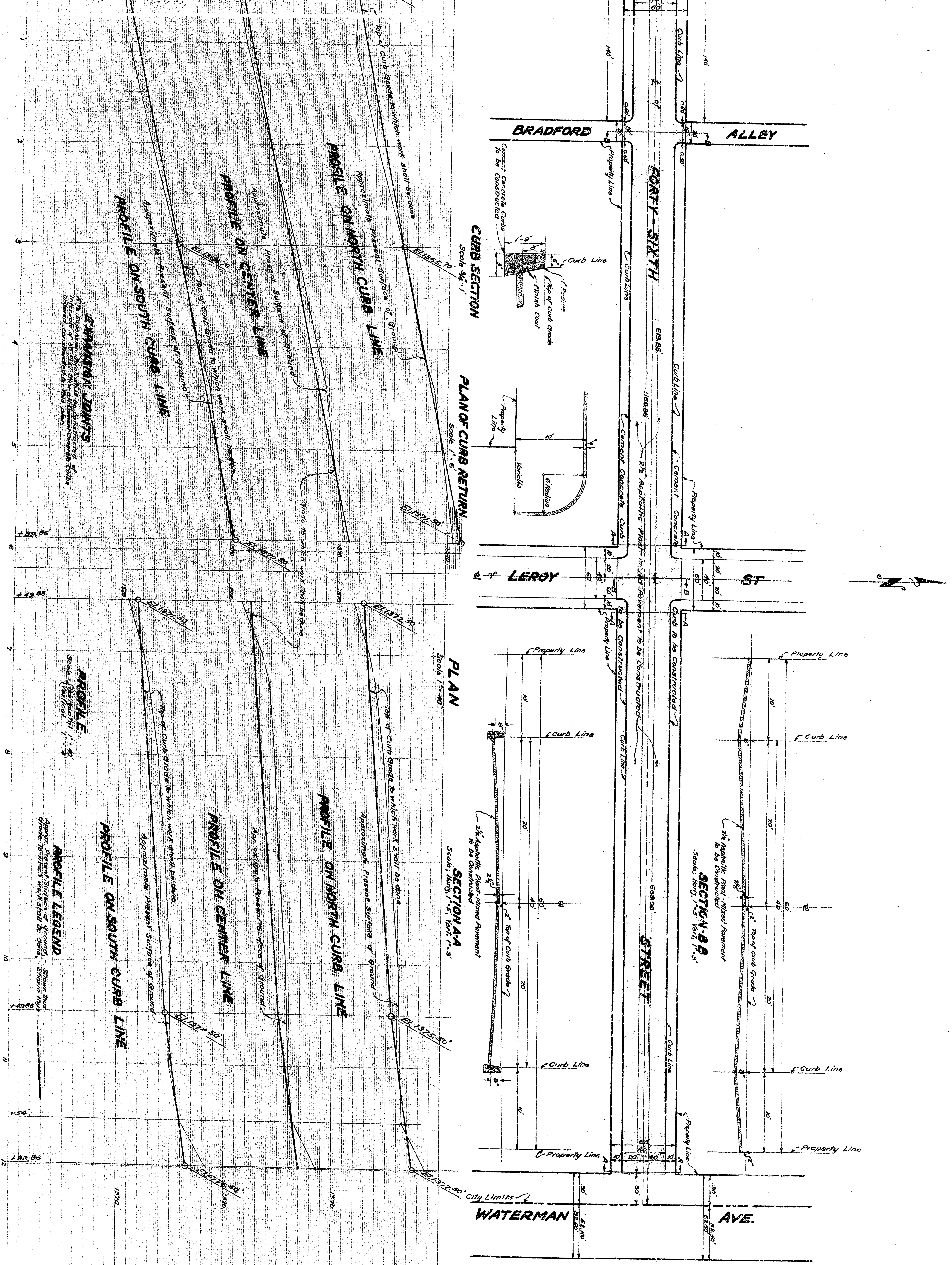
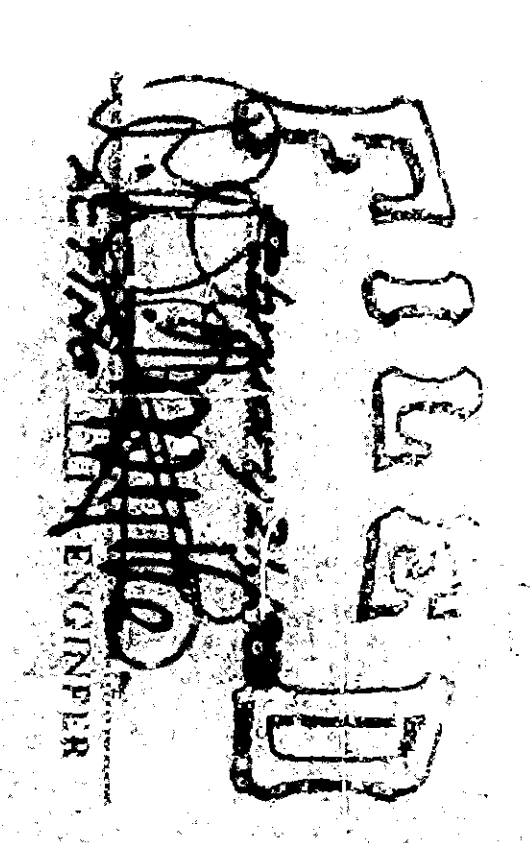


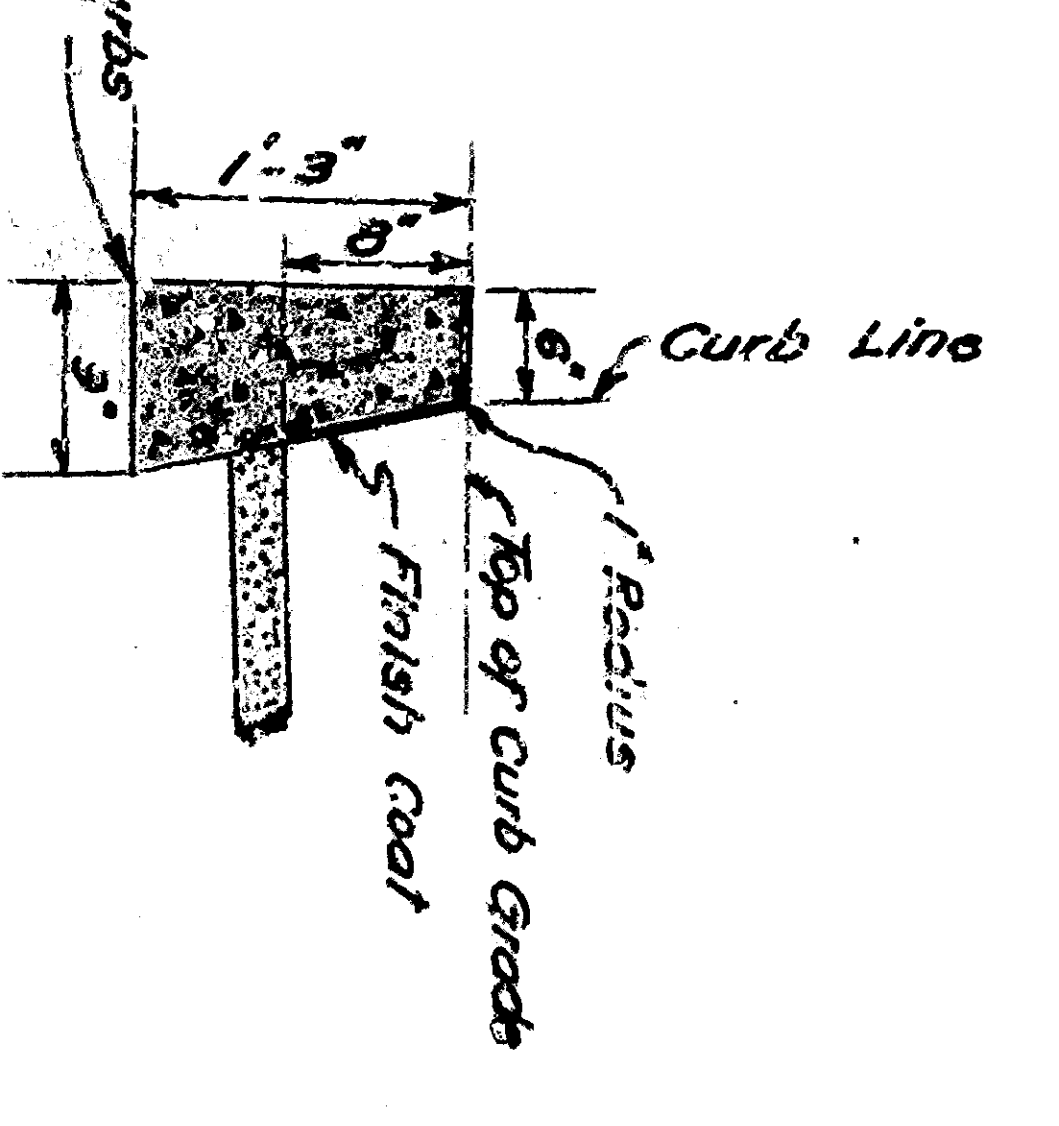
PLAN NO 1881  
 FOR THE IMPROVEMENT OF  
**FORTY-SIXTH STREET**  
 BETWEEN  
 SEPULVEDA AVENUE AND WATERMAN AVENUE  
 IN THE  
 CITY OF SAN BERNARDINO  
 CALIFORNIA

FEBRUARY 1950  
 R.D. FORSYTHE  
 Acting City Engineer

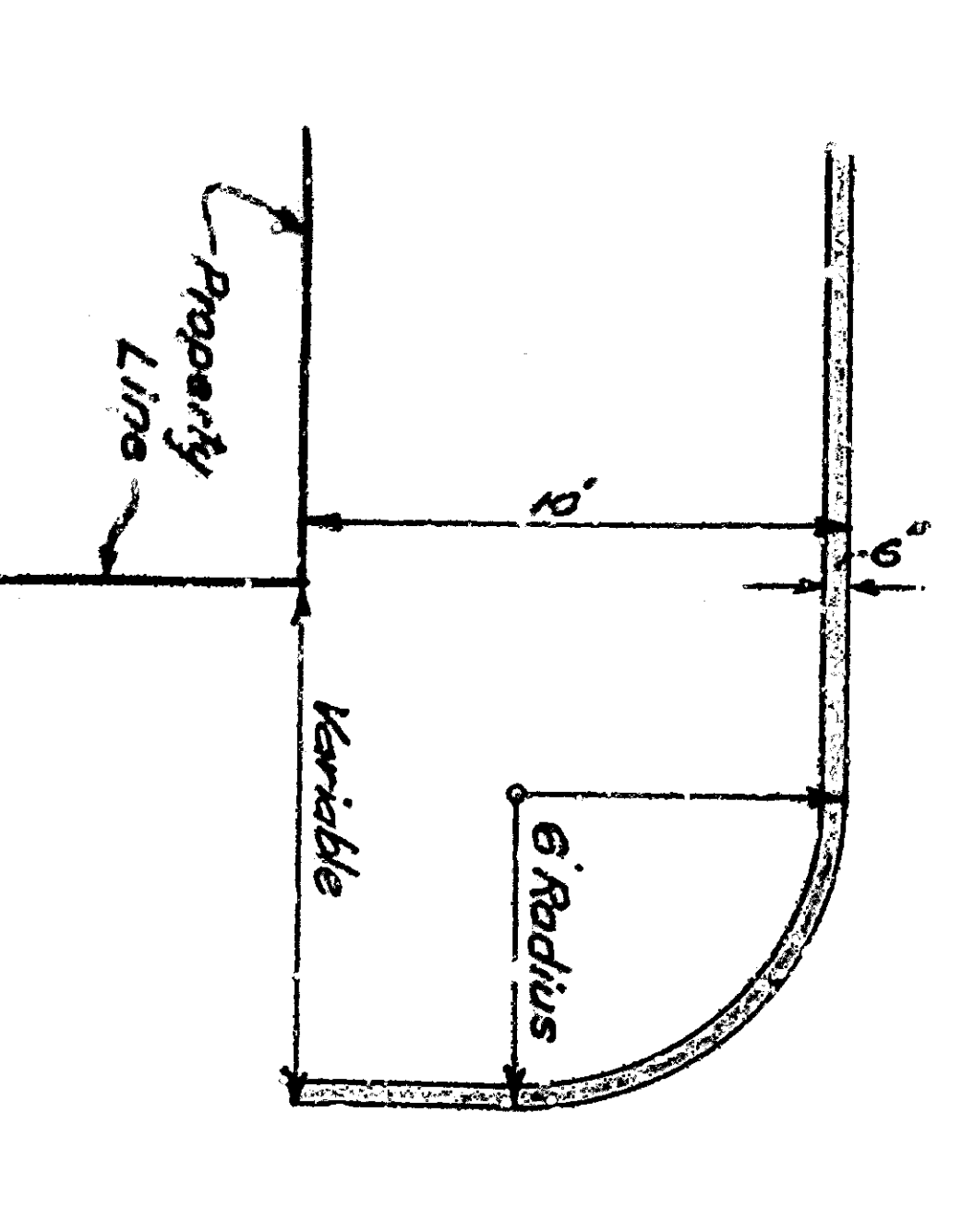
PLAN ADOPTED - February 20, 1950



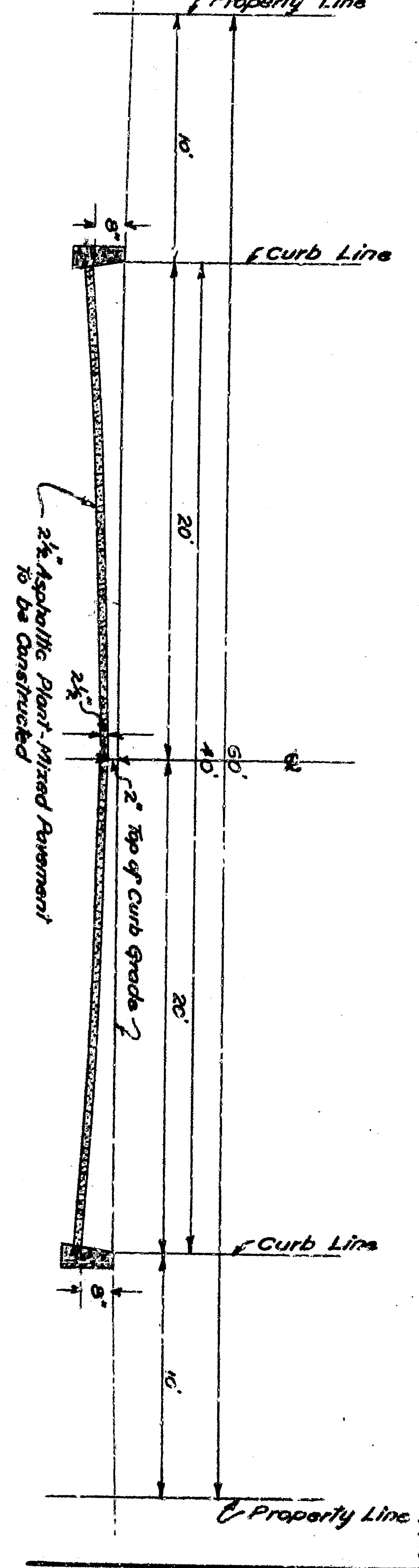
**CURB SECTION**  
 Scale 3/4" = 1'



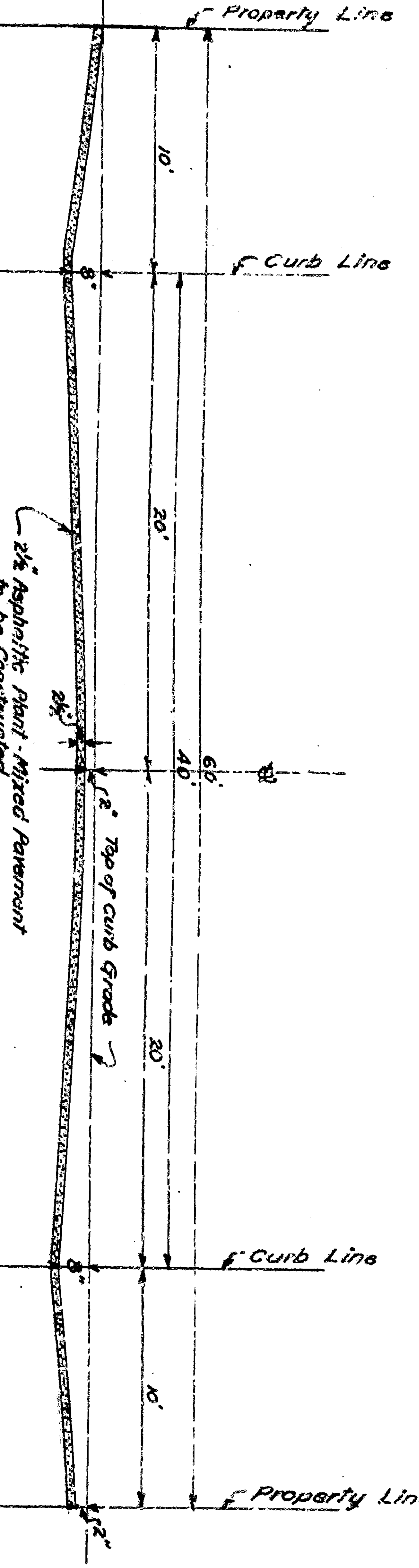
**PLAN OF CURB RETURN**  
 Scale 1" = 6'



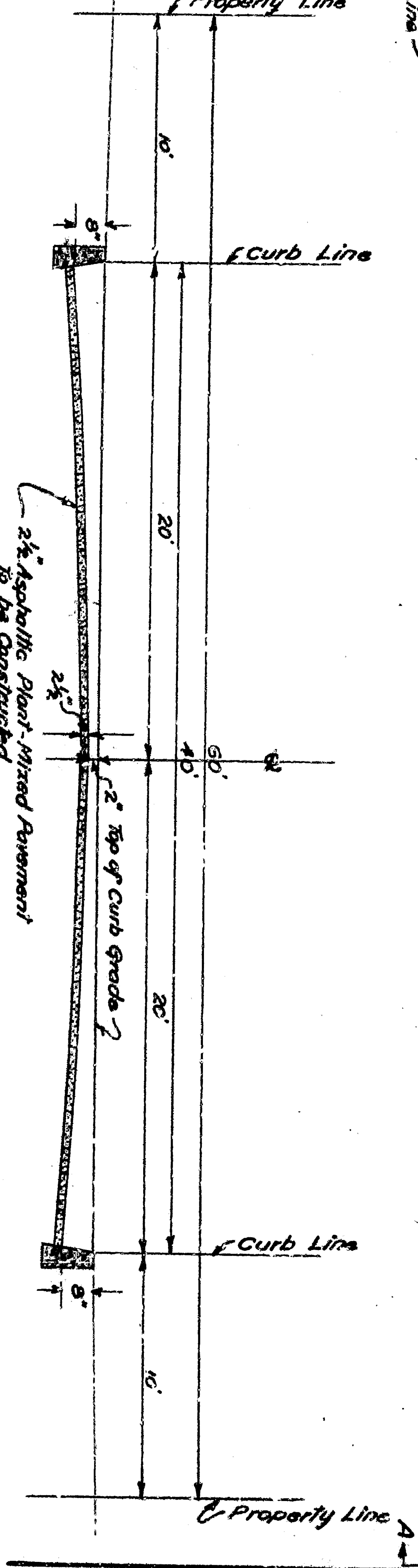
**PLAN**  
 Scale 1" = 40'



**SECTION S-B**  
 Scale: Horiz. 1" = 5' Vert. 1" = 3'



**SECTION A-A**  
 Scale: Horiz. 1" = 5' Vert. 1" = 3'



**PROFILE ON NORTH CURB LINE**  
 Approximate present surface of ground  
 Approximate present surface of ground  
 Top of curb grade to which work shall be done

**PROFILE ON CENTER LINE**  
 Approximate present surface of ground  
 Approximate present surface of ground  
 Top of curb grade to which work shall be done

**PROFILE ON SOUTH CURB LINE**  
 Approximate present surface of ground  
 Approximate present surface of ground  
 Top of curb grade to which work shall be done

**PROFILE ON NORTH CURB LINE**  
 Approximate present surface of ground  
 Approximate present surface of ground  
 Top of curb grade to which work shall be done

**PROFILE ON CENTER LINE**  
 Approximate present surface of ground  
 Approximate present surface of ground  
 Top of curb grade to which work shall be done

**PROFILE ON SOUTH CURB LINE**  
 Approximate present surface of ground  
 Approximate present surface of ground  
 Top of curb grade to which work shall be done

**EXPANSION JOINTS**  
 4" Expansion joints shall be provided at intervals of 20 feet in the concrete slabs and at the center of each curb section.

**PROFILE LEGEND**  
 Solid line - Proposed surface  
 Dashed line - Present surface  
 Dotted line - Station mark

**LEGEND**  
 1. 24" Aggregate Plant Mixed Pavement  
 2. 2" Top of Curb Grade  
 3. 5" Finish Coat  
 4. 1.5' Radius  
 5. 6' Radius  
 6. 24" Aggregate Plant Mixed Pavement  
 7. 2" Top of Curb Grade  
 8. 5" Finish Coat  
 9. 1.5' Radius  
 10. 6' Radius

**TITLE TO STREET**  
 FORTY-SIXTH STREET is dedicated by Act of SAUL BERNARDINO  
 Mayor of San Bernardino County

**GRADE OBSERVANCE**  
 FORTY-SIXTH STREET shall be established by Resolution  
 No. 1234 of the City of San Bernardino

**DATUM**  
 All elevations shown in this plan are to the datum of the  
 National Mean Sea Level. The City of San Bernardino, California  
 Ordinance No. 1234 of the City of San Bernardino, California